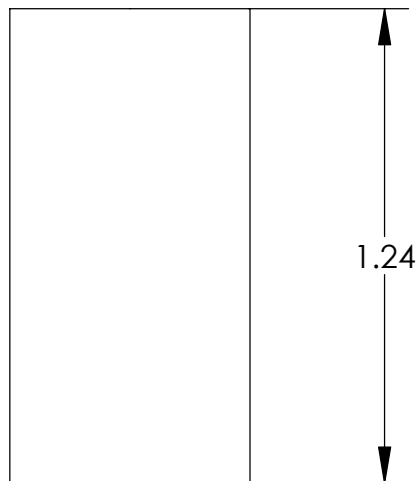
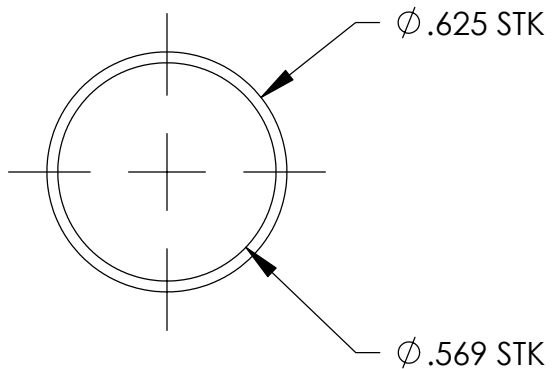


REVISIONS		
REV	DESCRIPTION	DATE
B	WAS .028" W.T.	6/3/2003



NOTES:
1. MAKE FROM .625" X .028" W.T. TUBE.

UNLESS OTHERWISE SPECIFIED:		<div>High Precision Devices</div> <div>1668 Valtec Lane, Suite C, Boulder, Colorado 80301 Phone: (303) 447-2558 Fax: (303) 447-2548 Web Site: www.hpd-online.com</div>				
DIMENSIONS ARE IN INCHES DECIMAL TOLERANCES: .X ±.030 .XX ±.015 .XXX ±.005						
ANGULAR TOL: ± 1° SURFACE ROUGHNESS:√63/						
INTERNAL AND EXTERNAL SURFACE INTERSECTIONS SHALL BE UNIFORMLY FINISHED WITH CHAMFER .005/.010 X 45° OR RADIUS .005/.010. CHAMFER ALL THREADED HOLES 110° OF MAJOR DIAMETER X 45°		TITLE: p02101-084 Ln2 vent tube, upper				
		CONFIGURATION: 0-Default				
MATERIAL:	304/316/321 SST	SIZE	QTY PER ASSM: 1	SCALE: 2:1	SHEET 1 OF 1	REV
FINISH:	NONE	A	DATE: 5/19/2004	DRAWN BY: C. Danaher		B